

STATEMENT OF CAPABILITY

Linton and Kay Galleries - Major Project Division

INTRODUCTION

Located in Perth, Western Australia, Linton & Kay Galleries hosts an impressive collection of quality fine art, complemented by a range of exhibitions, events and art services. Founded in 1998 by Linton Partington and Gary Kay, the business has developed an extensive network of artists, galleries and art industry professionals enabling it to produce events and projects with established and emerging artists from not only Australia but also internationally.

Established 21 years ago, the now iconic, original premises in Railway Road, Subiaco, enjoys a dedicated client base and is committed to providing corporate, private and investment collectors access to fine art of the highest quality. The company has operated from a number of locations and currently also has a stockroom and framing gallery in the newly established 'Pickle District' in West Perth as well as a third venue at Mandoon Estate Winery in the Swan Valley.

In addition to its artist representation and exhibition programme, Linton & Kay has increased its focus on art consulting and procuring particularly for commercial developments such as CBD office buildings, medical developments and hotels which has resulted in it developing a major project division.

OUR TEAM



Linton Partington - Director

Linton Partington is the founding director of Linton & Kay Galleries as well as the Managing Director of multidisciplinary arts company Obscure View Pty Ltd. Prior to establishing Linton & Kay, Linton worked as a Chartered Accountant and has substantial experience in project and financial management. With a passion for the Arts and a background in business, Linton has played a significant role in taking Linton & Kay Galleries from a fledgling art gallery to one of Western Australia's leading and longest standing commercial art galleries. In recent years he has expanded its offering to include major corporate fit outs. This has led Linton to the pursuit of and specialization in larger hospitality projects such as The Intercontinental Hotel, Perth and the Ritz Carlton, Elizabeth Quay.



Miranda Brown - Manager

Miranda Brown is the General Manager at Linton & Kay Galleries. Being responsible for coordinating the gallery's daily activities, Miranda also relishes in the creative opportunities that fill her days as part of the Linton and Kay team. Having almost 30 years of art world experience Miranda has worked in many sectors including management, art consulting, art curating for aboriginal artists from the Pilbara and events management. Miranda's recent projects include managing the art collection for Rio Tinto and as part of the team responsible for curating major art collections for both The Intercontinental and The Ritz Carlton Hotels.

OUR APPROACH

Our approach is a collaborative one where we work as part of the overall project team to deliver outcomes commensurate with the design intent and corporate culture of the client.

We see the importance in relationship building with our clients to deepen the understanding of their projects and therefore achieve the best outcome.

Through operating the gallery business of Linton & Kay Galleries, we have established relationships with hundreds of artists, galleries and other creatives which enables us in turn to develop and produce a unique package for each project we undertake.

MAJOR ADVANTAGE

The unique business of Linton & Kay that distinguishes us over other arts organizations is that our team comes from more of a commercial rather than arts backgrounds which has resulted in a thorough understanding of project management requirements including the need to comply with budgets and deadlines. This ability, along with a thorough understanding of and experience with the interpersonal skills required to manage a diverse range of individuals such as artists, designers and corporate leaders puts Linton & Kay in a unique position.



RECENT PROJECTS

2014, EY Building, 11 Mounts Bay Road



2016, Charter Hall, 225 St Georges Terrace



RECENT PROJECTS

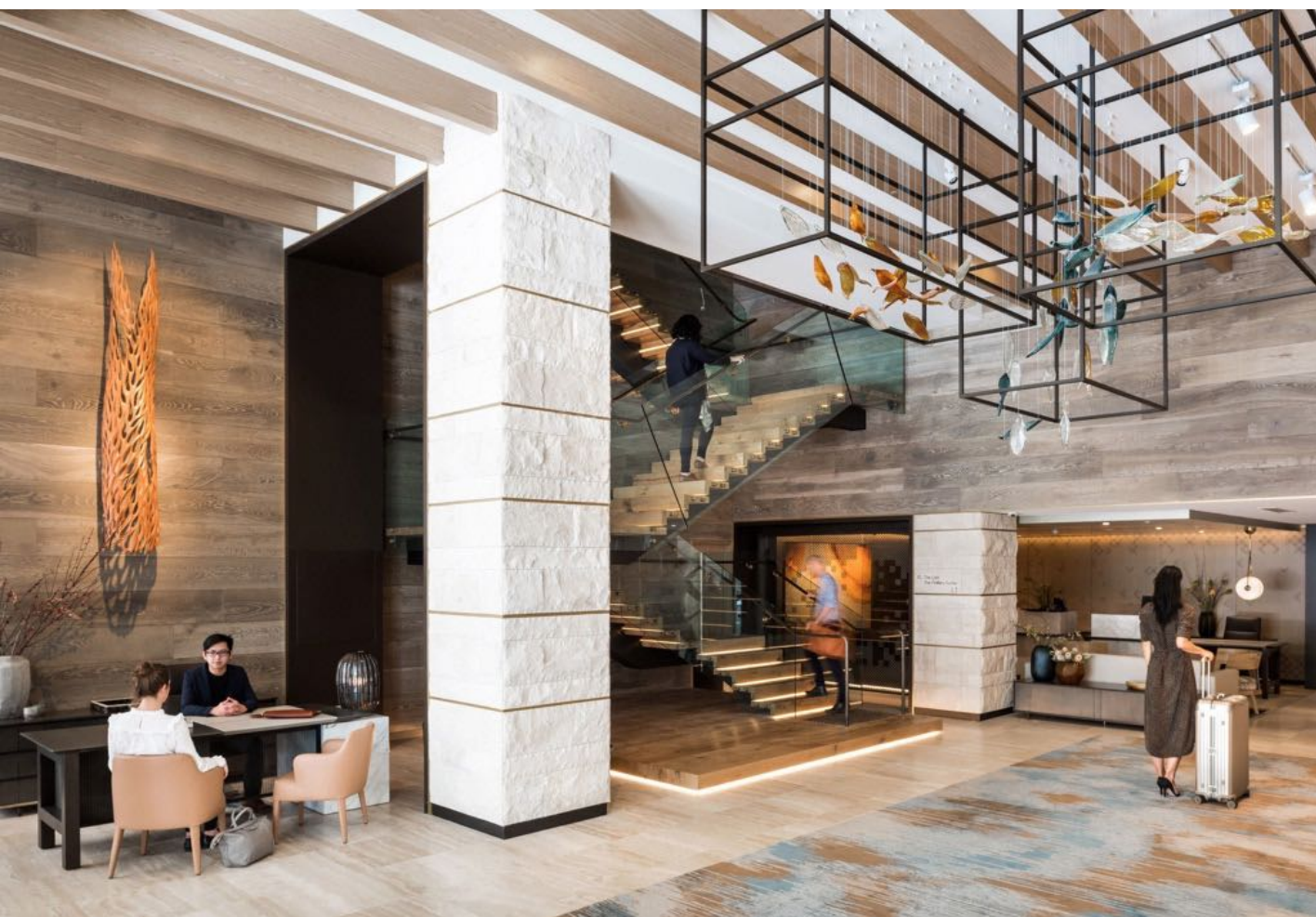
2017 Intercontinental Hotel, Perth

Owner:	Unir Management Pty Ltd
Architect/ Designer:	Woods Bagot and EDG Singapore
Builder:	Built
Operator:	Intercontinental Hotel Group
Project Managers:	Johnston Group

In 2016 we were approached by the owners of the new Intercontinental Hotel, Perth to develop artwork concepts for the rooms, corridors, lift lobbies, restaurants and public areas for the hotel located in Hay Street, Perth.

We undertook a number of workshop sessions often involving 20 representatives of the various interested parties in order to develop themes and artwork concepts for areas throughout the hotel

Through this process we were able to commission not only original artworks for the numerous public areas of the hotel but also original artworks for the guest rooms which included 187 hand painted framed works, 213 hand-made, blown glass bowls and 213 hand-made and hand painted ceramic vessels. In total, almost 700 artworks were produced and installed over an 8 month period.



RECENT PROJECTS

2017 Intercontinental Hotel, Perth

In addition to the above guest room items, the following artworks were commissioned:

A suspended glass sculpture incorporating 120 pieces of hand blown glass located in the entry lobby

3 x 1.7m high bronze sculptures

2 x bronze maquettes

2 x major oil paintings - each 2.1m x 3m for lift lobbies on ground and first floors

15 x oil paintings measuring 1.5m x 0.9m in lift lobbies on guest floors

1 x major oil painting 2.1m x 3.5m for main lobby

1 x major oil painting 1.8m x 2.8m

1 x carved, suspended timber sculpture (a tree) measuring 2.5m in height

2 x 5 piece hand carved, hand painted birch ply panels measuring 4.5 m long

1 x 5 panel framed, hand cast paper artworks measuring a total of 6.5 m long

Various other oil paintings, glass sculpture, metal sculpture and timber pieces



RECENT PROJECTS

2019 Bowra & Odea Funeral Chapel, Mandurah

Owner:	Bowra & O'Dea Funeral Directors
Architect/ Designer:	Walter Hunter & Penny Watson
Builder:	Private
Operator:	Bowra & O'Dea
Project Manager:	Penny Watson

Regular client Bowra & O'Dea have appointed us to develop several art collections for their funeral chapels.

The brief for this purpose-built premises south of Perth was to deliver a suitable collection within a very short turnaround. Drawing upon the stock of available artworks within our networks we were able to successfully deliver a thoughtful and sensitive collection for their flagship location.

Our relationship with the owner and architect allowed us to understand the nature of the build and therefore develop a considered theme of artwork for the chapel with the main focus being the importance of sensitivity within the spaces. The artwork selected was simple, courteous and understated with the intent to make visitors feel as stress-free as possible during the most difficult time in their lives.

This modern chapel consists of a diverse range of spaces with artwork required for general public areas, offices occupied only by employees, arrangement rooms and family gathering areas. The collection conveys a level of sensitivity and professionalism.



RECENT PROJECTS

2019 Allen & Overy, Level 12, Exchange Tower, The Esplanade



RECENT PROJECTS

2019 Ritz Carlton Hotel, Perth

Owner:	Far East Consortium
Architect/ Designer:	Cottee Parker and Lombard and Jack
Builder:	Probuild
Operator:	Ritz Carlton
Project Managers:	Far East Consortium

In 2018 we were approached by Far East Consortium to assist with their art requirements for the new Ritz Carlton Hotel at Elizabeth Quay.

The process was slightly different than that for the Intercontinental Hotel in that during the early conceptual stage, the owners who were based in Hong Kong were unable to travel to Perth until late in the approval stage so concepts were developed remotely via their local management team. Final approvals and concepts were presented to the owners and Ritz Carlton Management when they visited Perth in early 2019.

The Ritz Carlton project involved the development of artwork themes to suit the unique geographic location of the hotel, the design intent of the architect and the interior design team as well as maintain the integrity of the Ritz Carlton brand.

Our role was important as we were required to balance the interests of each party.



RECENT PROJECTS

2019 Ritz Carlton Hotel, Perth

One of our aims is to maintain integrity of place and history and in the case of the Ritz Carlton, a unique opportunity arose to do just that with the availability of historical artefacts excavated by an archeological team from the basement of the hotel when digging the footings. This opportunity was embraced by a local sculptor who set about producing a 6 metre long wall sculpture for the main lobby from blue and white china shards buried in the 1870s and a prominent lift lobby sculpture again using found objects from the hotel site.

In total, approximately 500 works were produced for the hotel.

Key pieces include:

5.4 x 3m canvas by a Pilbara indigenous artist for the main entry statement.

Major canvases throughout the public areas of the hotel, all produced by local artists including 204 reproduction canvases which were incorporated into the bedroom headboards for every guest room in the hotel.

2 x bronze sculpture

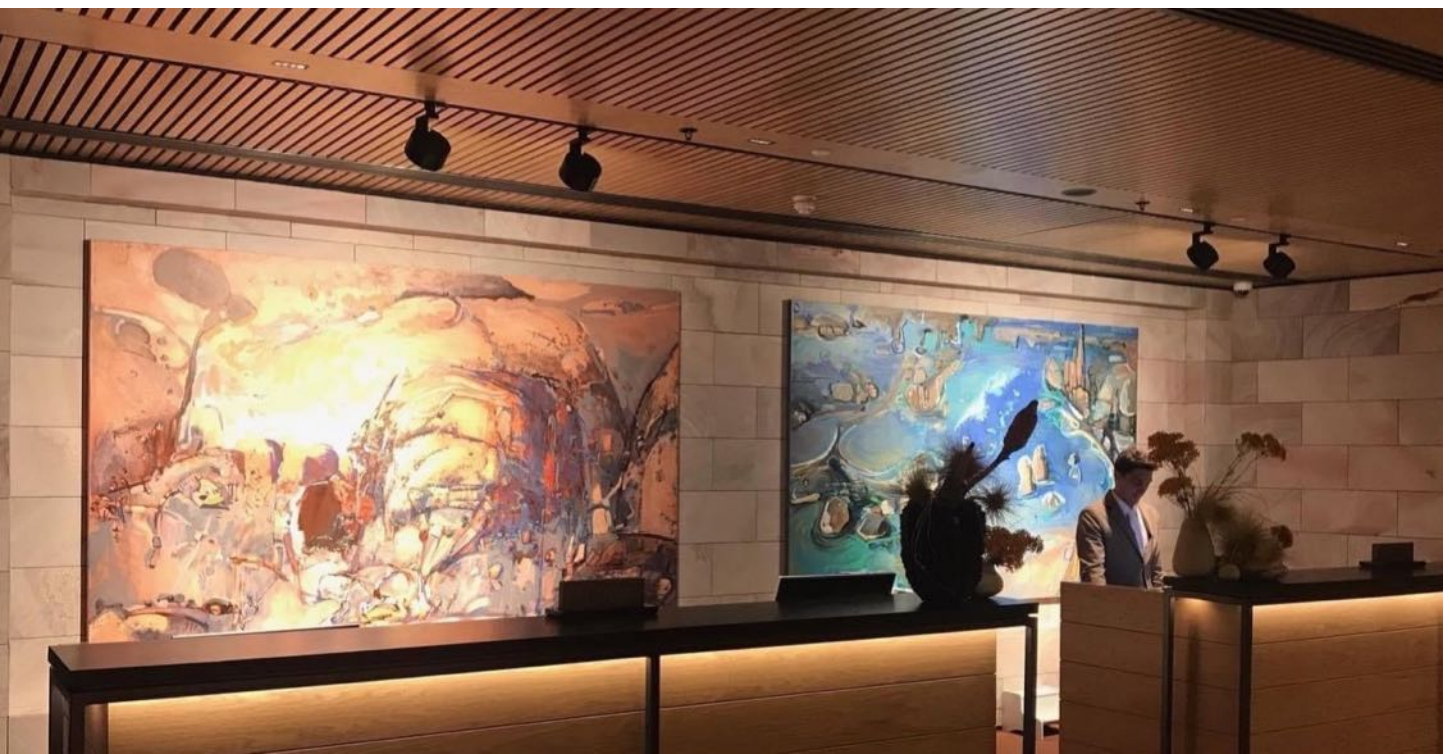
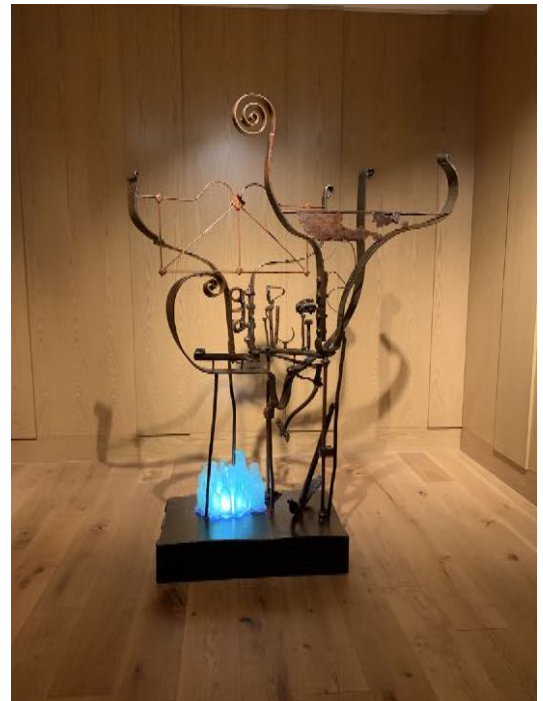
4 x reflective sculptures for the hotel restaurant

Photographic works by Tony Hewitt and Dennis Glennon from their joint "Girt By Sea" project which toured Australia in 2018.



RECENT PROJECTS

2019 Ritz Carlton Hotel, Perth



THANK YOU

Contact Details:

Linton Partington
0417 952 781
linton@lintonandkay.com.au

Miranda Brown
0417 171 021
miranda@lintonandkay.com.au

Linton & Kay Galleries
11 Old Aberdeen Place West Perth 6005

www.lintonandkay.com.au